



Wednesday 12 December 2018 [www.sis.school.nz](http://www.sis.school.nz)

Principal: Taituúga Geoff Siave

*Kia Ora Talofa Greetings Namaste Kamusta Guten Da Bula Konichi Wa*  
*Bore da Anyoung haseyo Malo e lelei Salaam Alaikum*

The last few days of term are here. For half of our pupils this is the final week of their primary schooling. We certainly wish them all the best for 2019 and beyond. Our year sevens will become the role models for our next intake of pupils and we look forward to a positive year of learning and activities which stretch our children to be ON FIRE FOR LEARNING.

**Survey results** Thanks so much taking part in the recent survey. We received surveys from parents, current pupils, teachers, Banks Avenue families and Shirley Primary School families. Here is a summary of our findings.

Q1 - What is important for your child: Replies were mainly in two areas:

Personal qualities - confidence, positivity, resilience, cultural awareness, etc.

Academic achievement - in addition academic achievement, preparation for secondary school was also mentioned.

Q2 - Concerns for your child: Issues that could affect learning such as teacher:pupil ratios, special learning needs, bullying, class design, communication. Concern also about relationships and future employment prospects

Q3 - How can school work more effectively?: Communication, home/school partnership, positive school culture, broad curriculum.

Q4 - What should be prioritised: Good character, peaceful, friendly, school presentation and environment, communication, Te Reo, cultural inclusiveness, challenging learning environments

**Reports Home Thursday 13 December** - Please expect these from your child on Thursday 13th December. Contact the school if not received, or if you wish to discuss the report with the teacher.

**Year 8 Dance 6.30-8pm Thursday 13 December** - This very special event is only a day away. Tickets must be pre-purchased - no door sales. Please send money and a permission note - write your own note if you don't have our version. Please include \$5 and confirmation that your child will be picked up by a parent. No children will be permitted to leave without an accompanying adult (not other teenagers). Thank you.

**Prize giving Tuesday 18 December 11am-12.20pm** - This is our final event of the year. Again, it is a special time, and we invite parents to join us as we recognise and celebrate some achievements from 2018. Children are to be in complete uniform. School will finish for the year at the conclusion of the ceremony.

**School closes at 12.30pm Tuesday 18 Dec**

**Uniform 2018 - Year Seven please note:** Our current logo was introduced early in 2016. We have had a "phase-in" period of more than two full years. **From the beginning of 2019 only the new logo is to be worn as school uniform.** F

**Shirley District Music School** Recently I attended the end of year final concert for the SDMS. It was wonderful to see and hear children from local schools playing their instruments which they have been learning through SDMS. Brass, wind, percussion, string, it was a very entertaining evening as children from throughout the primary age group performed. SDMS was formed to provide quality, affordable music tuition for children in the Shirley area. If you are at all interested in your child learning to play an instrument, you can find out more from the Shirley District Music School page on our school website [www.sis.school.nz](http://www.sis.school.nz). Tuition and instrument hire fees are *extremely* competitive compared to other primary school age providers. Refer below for details.

#### **SIS Futures Survey Prizewinners**

1. Shirley Primary
  - a. SIS Pool Key: Rahil Chand
  - b. SIS stationery pack for 2019 or 2020: Pine Kolio
2. Banks Ave
  - c. SIS Pool Key: Daniel Smith

- d. SIS stationery pack for 2019 or 2020: Mia Harwood
- 3 Shirley Intermediate School
  - e. SIS Pool Key: Nevaeh Peseta
  - f. SIS stationery pack for 2019 or 2020: Gracie-May Andrews
- 4 Double passes to Reading Cinema at The Palms
  - g. Akiza Dimaranan - SIS
  - h. Shreeya Vanshali- SIS
  - i. Gemma - Shirley Primary
  - j. Kereru Huffam - Shirley Primary
  - k. Cobe Thorn - SIS
  - l. "Connor" - Banks Ave?
  - m. Neeko Birch-Te Amo - Shirley Primary
  - n. Carlos Colville - Bromley School -
  - o. Shaqieq Joya - SIS
  - p. Muntana Sriwiset - SP
- 5 Shirley District Music School, half annual tuition fee, not including instrument hire - Ella Benseman - SIS
- 6 SIS Pool Key - Belle Jackson SIS

**CAIM's Athletics Day**



**It was a cloudy and sometimes wet day at the new stadium. In saying that, the new facilities are fantastic.**



**Amelia participating in her Year 7 girls 800m race. She is seen here finishing the race strong.**



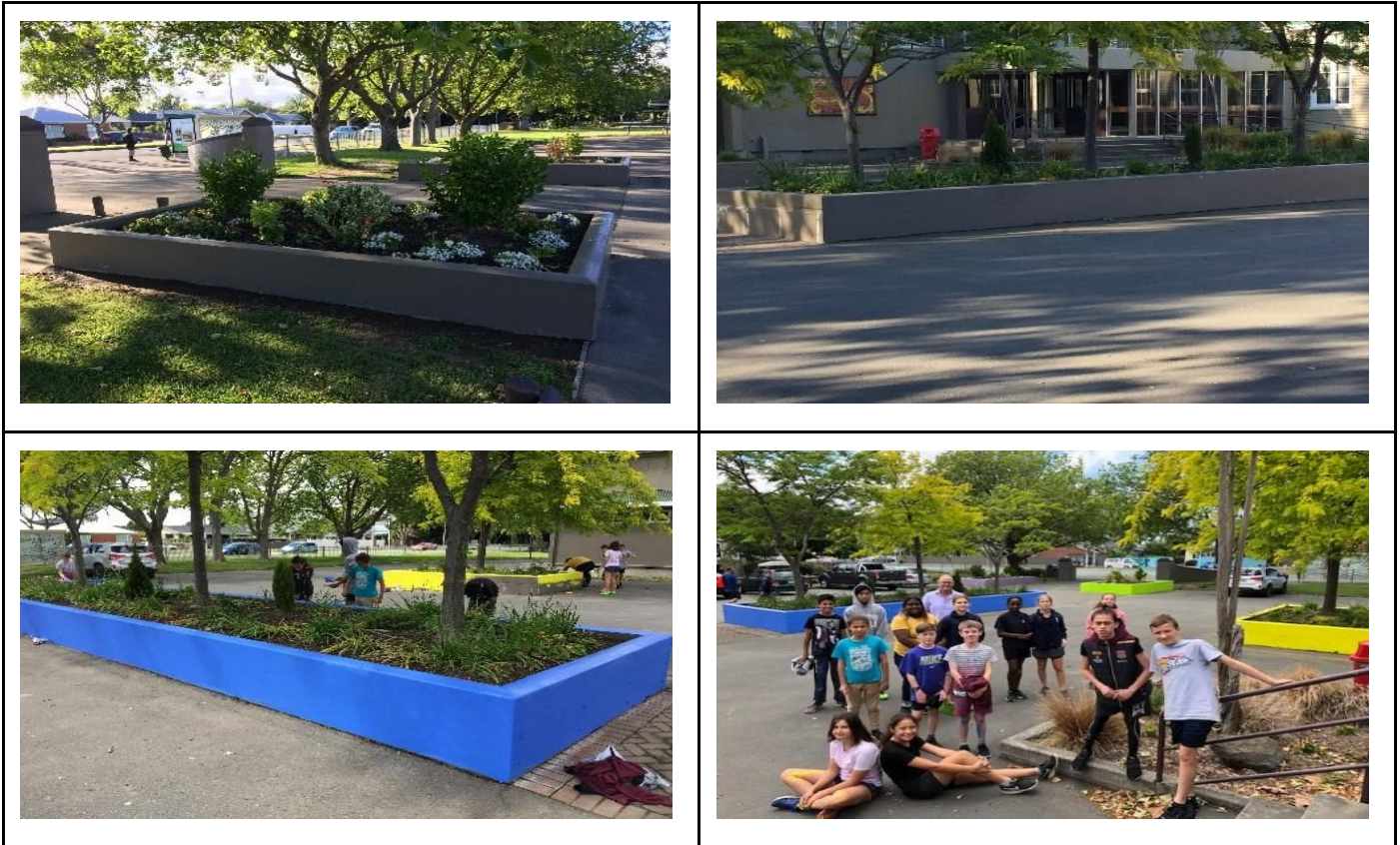
**Nova is about to take off as she participates in the Year 8 girls long jump event.**



**Jordyn is about to throw the discus in the Year 8 boys event. He came a very respectable 4th overall. The pic is a bit dark as it was raining at the time.**

### Student Leaders Painting

The student leaders painted the plant boxes at the front of the school. As you can see it has added a lot of colour to the physical environment of the school.



### Safety App for your child's phone:

OurPact is a parental control app and family locator. It can be researched under [ourpact.com](http://ourpact.com)

It is a breakthrough screen time parental control app, app blocker, website blocker, GPS locator, kid tracker, family locator, and more. It is well worth a look.

### Speeches

A big congratulations to Shaeqeq (left) and Reeve (right) who were selected to represent our school at the inter-intermediate speech competition. Both students did extremely well and represented us with pride. Also, thanks to Ms Holden for organizing the speech competition within our school.



### SHIRLEY DISTRICT MUSIC SCHOOL (SDMS)

SDMS opens earlybird enrolments for 2019 music tuition on 1 October until 15<sup>th</sup> December.

SDMS offers tuition in the following instruments.

- *Strings: cello, double bass, viola, violin*

- Brass: cornet, horn, trombone, trumpet
- Woodwind: clarinet, flute, recorder, saxophone

Other: guitar, keyboard/piano, tuned & untuned percussion

**SDMS Tuition fees for 2019 are:**

- \$160.00 for beginners (includes tutor book)
- \$125.00 for returning students
- \$25.00 discount from the total for each extra sibling enrolled

Early bird enrolment discounts 1st October to 15th December 2018

- \$144.00 10% discount (first year with SDMS)
- \$112.50 10% discount (returning students)

Community service card

- \$112 30% discount (first year with SDMS)
- \$87.50 30% discount (returning students)

Early bird enrolment discounts 1st October to 15th December 2018

- \$100.80 30% discount (first year with SDMS)
- \$78.30 30% discount (returning students)

**SDMS Instrument Hire**

SDMS subsidises 25% of instrument hire from Sedley Wells for brass and woodwind. Other instruments hired out from SDMS.

The best musical deal in town. Try something new. Fun, creative, good for the brain and for the soul. For more information see the SDMS website:

<http://shirleyint.ultranet.school.nz/Web/66/>

Email [sdms@sis.school.nz](mailto:sdms@sis.school.nz), or ring SIS on 385 2229, or Acting Music Director Janet Simôn Email [flutecookjanet.simon@gmail.com](mailto:flutecookjanet.simon@gmail.com) or 323 6502 or 027 312 4

**Room 1 Christmas Baking**

Students in Room 1 participated in class baking on Tuesday 11 December. As you can see, the students enjoyed themselves and the baking looks delicious. Well done to the students, parent helpers, Carol, and Ms Dwan.



